



3



2

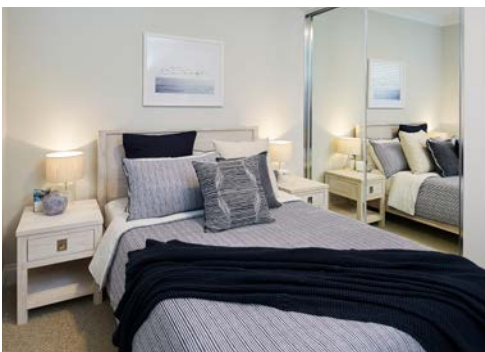


2



12.5m

redink
 H O M E S
 your home, your choice



THE FAIRBANKS

GOOLJAK RISE, LAKELANDS
 SUITS 12.5m FRONTAGE

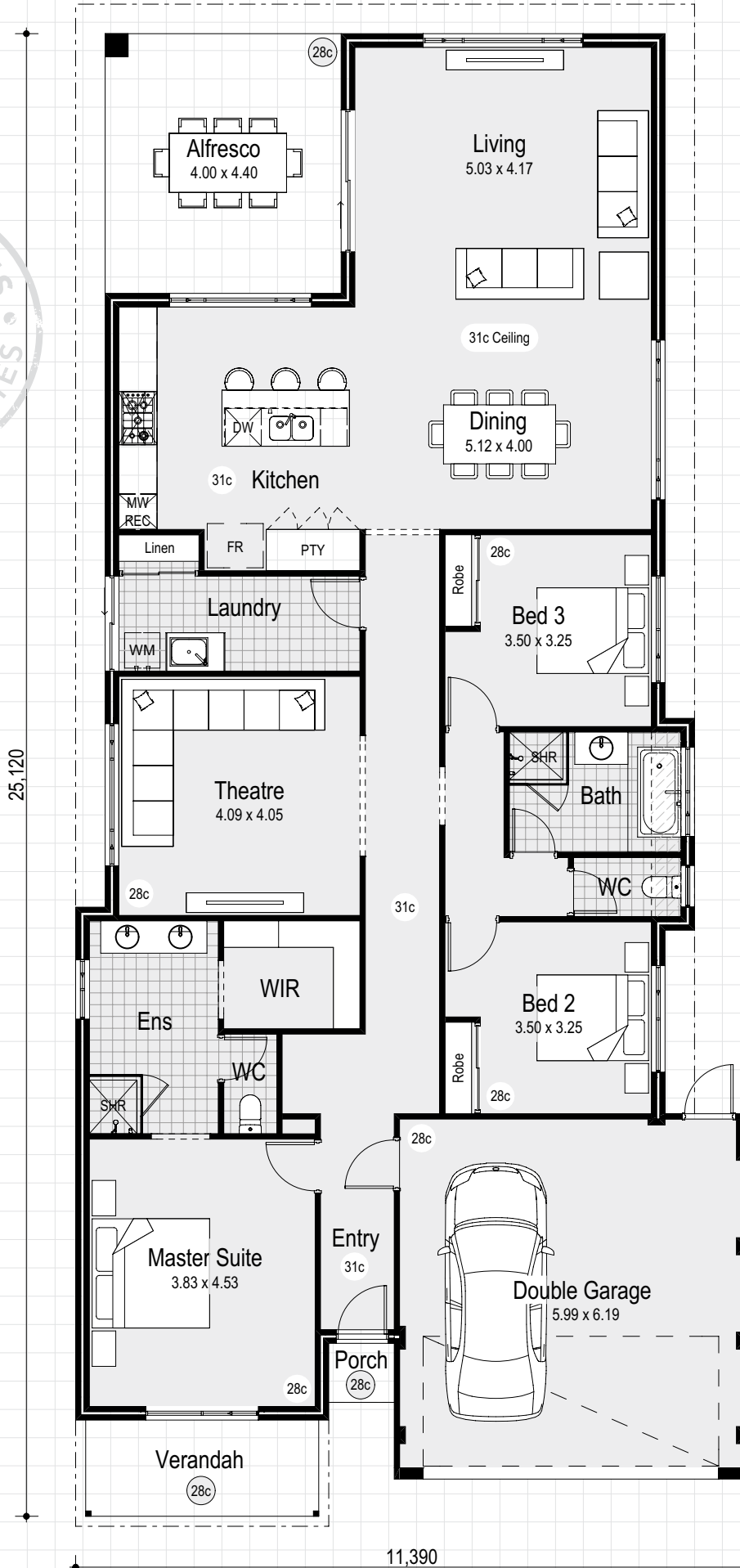
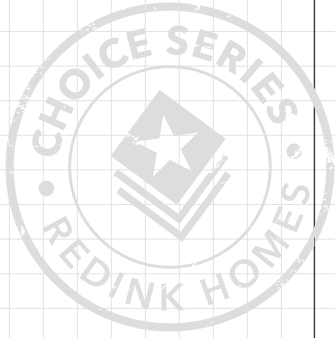


THE FAIRBANKS



THE FAIRBANKS CHOICE

SUITS 12.5m FRONTAGE

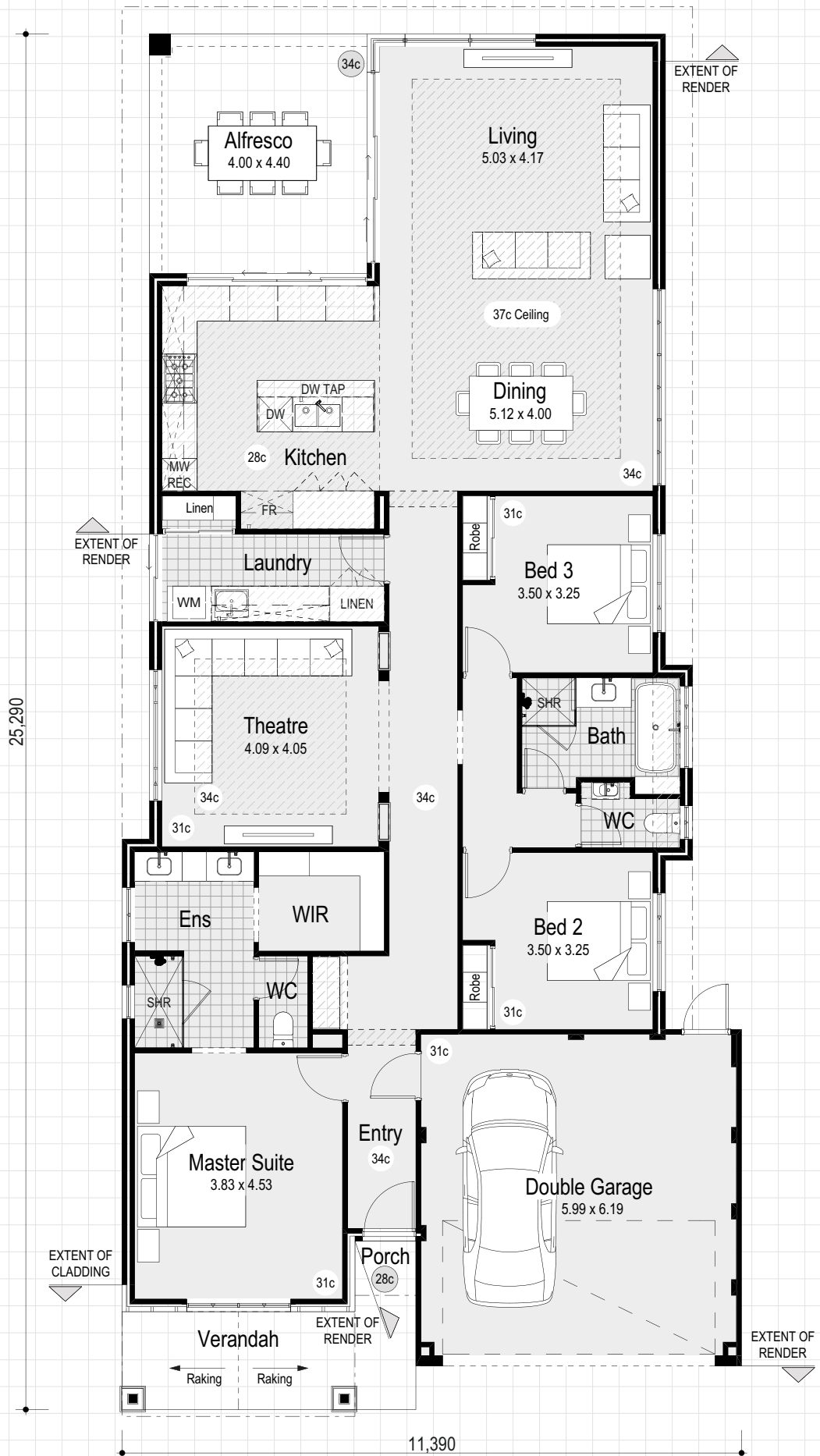


House	186.98m ²
Alfresco	17.60m ²
Porch	1.11m ²
Garage	36.32m ²
Total Area	248.45m²

THE FAIRBANKS DISPLAY

SUITS 12.5m FRONTAGE

Personalise your home design by making changes with a red pen



House	186.97m ²
Alfresco	17.60m ²
Porch	9.16m ²
Garage	36.32m ²
Total Area	250.05m²

Complete with big name Choice Series inclusions



Our Choice Series is packed with big name features and a long list of quality inclusions. It's an affordable starting point for you to add what you want, without paying for things that appeal to someone else. This way you get a home that matches your style for a price that's inside your budget.

Exterior

- ✓ Double clay brick construction (8 colours)
- ✓ Designer elevation
- ✓ **COLORBOND® steel roof**, fascia, gutters & downpipes
- ✓ 6m paved (30+ colours) driveway & pathway*
- ✓ Full paint finish (excluding internal walls)
- ✓ Treated roof timbers (blue pine)
- ✓ External lights to portico, laundry & alfresco*
- ✓ Eaves as shown on plan
- ✓ Hardiflex lining to all eaves & garage*
- ✓ External taps (x2)
- ✓ **Double glazing throughout****
- ✓ Aluminium window frames and sliding doors including fly screens (8 colours)^
- ✓ 25° pitch roof
- ✓ Termite treatment to perimeter/garage
- ✓ **SUV garage (28c ceiling)**
- ✓ Acrylic render*

Interior

- ✓ Double garage with auto sectional door, 2 remote controls & 1 wall control
- ✓ Fully ducted **Daikin reverse cycle air conditioning** (up to 10 outlets, 4 zones/1 constant)
- ✓ **Gas instantaneous hot water system** with wall box (26 litre)
- ✓ **High ceilings** to living area (**31c**) as per plan
- ✓ Feature front entry door
- ✓ Double deadlocks to front and garage entry door
- ✓ Lever door handles to all internal doors
- ✓ Soft close drawers & cupboards throughout
- ✓ Flick mixer tapware
- ✓ Painted Redicote flush panel internal doors
- ✓ Metal internal door frames
- ✓ Weather draft seals to front entry door
- ✓ Premium light switches (grey or white)
- ✓ Chrome floor wastes throughout
- ✓ Feature 75mm cornice throughout (2 styles available)
- ✓ Protective metal corner beading to all internal trafficable areas
- ✓ Locking system to all sliding doors and windows added security
- ✓ Double power points throughout
- ✓ 2 hard wired smoke detectors (interconnected)
- ✓ Fibre communication ready including phone point, data point and TV point
- ✓ Light point to each room

Kitchen

- ✓ 20mm **essastone benchtop to kitchen with 300mm breakfast bar overhang** (one colour throughout)
- ✓ Choice of **Westinghouse** or **Inalto** stainless steel electric oven
- ✓ Choice of **Westinghouse** or **Inalto** 900mm gas hot plate
- ✓ Choice of **Westinghouse** or **Inalto** 900mm canopy rangehood (flumed)

- ✓ Selection of handles to all cupboards and drawers
- ✓ ABS edging to all cabinet doors, drawers & exposed edging
- ✓ Bank of 4 drawers to kitchen
- ✓ 4 x shelves to linen & pantry
- ✓ 700mm high tiled splashback behind hotplate
- ✓ Double bowl under mount kitchen sink with flick mixer tap
- ✓ Dishwasher and microwave recess*

Bathroom/Ensuite

- ✓ **Double vanity to ensuite**
- ✓ **Rectified porcelain floor tiling** (300mm x 300mm)[†]
- ✓ Laminated benchtops to ensuite and bathroom (one colour throughout)
- ✓ Hobless showers to ensuite and bathroom
- ✓ Ceramic basins to ensuite & bathroom (choice of 2)
- ✓ Dual flush closed coupled china toilet suite with soft closing lid
- ✓ Semi-frameless shower screens with pivot door to ensuite & bathroom
- ✓ Handheld shower rose on rail
- ✓ 2.1m high tiling to shower recess to ensuite and bathroom
- ✓ Bath (1525mm) to bathroom
- ✓ Double towel rails to ensuite and bathroom
- ✓ Toilet roll holder to ensuite and WC
- ✓ Mirrors to ensuite and bathroom (2 options)
- ✓ Privacy latches to ensuite, bathroom & WC
- ✓ Flumed self-closing exhaust fans to ensuite, WCs & bathroom

Bedroom

- ✓ Double robes with shelf & rail
- ✓ **Mirrored or vinyl sliding doors** to robes (4 colours) to bedrooms 2, 3, 4 & 5*

Laundry

- ✓ **Rectified porcelain floor tiling** (300mm x 300mm)[†]
- ✓ Laminated benchtops (one colour throughout)
- ✓ 1m wide laundry cabinet with inset trough
- ✓ Laundry cabinet and trough with flick mixer tap
- ✓ Washing machine taps

Construction Specifications

- ✓ Housing Industry Association (HIA) fixed price contract
- ✓ Full working drawings
- ✓ Full indemnity insurance
- ✓ Contour site survey
- ✓ Engineers site report
- ✓ Fully engineered concrete slab and footing
- ✓ Shire building license fees
- ✓ Western Power safety switch
- ✓ 6 months maintenance period
- ✓ Lifetime structural guarantee transferable
- ✓ Ongoing consultation with one of our design and sales consultants

* If applicable

Fairbanks Display inclusions

Want a little extra? Choose from some of the special inclusions featured on the Fairbanks Display.

Front Elevation

- Acrylic render and feature cladding to front elevation where shown
- Double doors and painted timber ceiling to front verandah
- Remote control sectional overhead garage door
- Render finish to garage internal walls
- Colorbond roof and unique 'wing' profile guttering to front elevation as shown

Master Suite/Ensuite

- 31c high ceilings as per plan
- 20mm engineered stone topped vanities
- Framed mirrors over double vanity basins
- Double size shower recess with double shower heads
- Designer feature doors, basins and tapware to ensuite as shown
- Wall tiling heights as shown to ensuite
- Walk in robe with designer custom fit out as shown

Entry/Passage

- 34c high ceilings to entry and main passage as per plan
- Glazed 1200mm wide front door as shown
- 28c high feature internal doors throughout the home

Living/Dining

- 34c high ceilings with 37c recessed ceiling plus 28c feature bulkhead over kitchen
- 28c windows and sliding double doors to side elevation and onto Alfresco

Theatre

- Feature 34c high recessed ceiling with negative detailing as shown
- Glass display shelving with cabinetry surrounds to theatre openings

Kitchen

- Designer kitchen with engineered stone benchtops, features doors, push catches, fully tiled splashback and mirrored kickboards as shown
- Large built in pantry with storage shelving as shown
- Kitchen cabinets feature overhead cupboards, microwave recess, double pullout bins, three banks of large drawers and a bank of small drawers
- 900mm stainless steel oven and hotplate with concealed rangehood as shown
- Extra wide sliding servery window with flyscreens opening from kitchen to alfresco
- Full width breakfast bar with 300mm overhang to island bench

Bathroom

- Semi frameless shower screen enclosure
- Engineered stone benchtop to vanity cupboards with designer doors
- Wall tiling heights as shown including wall tiling to display nook
- Framed mirror over vanity and glass shelves to display nook as shown
- Large family sized bathtub with designer tapware as shown

Powder room

- Vitreous china toilet with soft closing seat
- Engineered stone benchtop to vanity cabinet
- Vitreous china wash basin with designer mixer tap
- Framed mirror above hand basin where shown
- Dado height wall tiling where shown

Laundry

- Engineered stone benchtop with vitreous china trough and tiled splashback
- Overhead cupboards to laundry cabinets with designer doors
- Extensive underbench storage cabinets and linen press as shown
- Generous full width linen cupboard with glass sliding doors

Alfresco

- 34c high ceiling to alfresco with painted timber lined ceiling and scotia as shown
- Acrylic rendered finish to exterior walls and brick pier in alfresco area as shown

Others

- 31c ceiling height throughout the home (unless specified otherwise)
- Feature cornices and bulkheads as shown
- Feature skirting boards as displayed
- 31c ceiling height to garage with cornices as shown
- Boundary wall with squareline gutter to garage as shown
- Exposed joints to eaves sheets as displayed
- Round rainwater pipes with stand-off brackets as shown
- Generous linen storage cupboards and built in robes as shown
- Custom fitout to built in robes in bedrooms as shown
- Feature glass sliding doors to linen cupboard and built in robes
- Feature 28c high internal doors as shown throughout the home
- Light fittings as shown throughout the display home including pendant lights
- Generous brick paving allowance (based on on 300 x 300mm bricks)

THE FAIRBANKS



Start with Redink

Scott Park chose 'red ink' as the symbol for what his building company is all about: inviting input and welcoming your changes. Our commitment to giving people what they want continues to win service awards, year after year. If you're serious about changing the way you live, make the change with us. After all, it's your home, it's your choice.



WINNER OF
9 SERVICE AWARDS

Scott Park
MANAGING DIRECTOR



PERTH: 16 Frobisher Street, Osborne Park WA 6017
Ph: 9208 1111 Fax: 9208 1112 Sales: 9208 1110 redinkhomes.com.au

MID WEST: Second Floor, Suite 1, Champion House, 87 Marine Terrace Geraldton WA 6530
Ph: 920 8900 Fax: 9920 8901 Sales: 9920 8999 redinkmidwest.com.au

Geraldton Hub: Suite 1, Champion House, 87 Marine Terrace Geraldton WA 6530

SOUTH WEST: First Floor, Suite 40 Marlston Boardwalk, 23 - 25 Casuarina Drive Bunbury WA 6230
Ph: 9721 1500 Fax: 9722 7655 Bunbury Sales: 9791 1174 Busselton Sales: 9722 7680

Busselton Hub: Corner of Queen & Kent Street Busselton WA 6230 Ph: 9754 7585 redinksouthwest.com.au

Our specifications are subject to continual upgrade and change so please check with our Design & Sales consultant for exact inclusions.
**Excluding wet areas and timber products, please contact your sales representative if you would like to add double glazing to wet areas of your new home. ^Stacking door flyscreens available for 2 sliding panels. Cannot be screened by builder. Pictures for illustration purposes only.
*Additional costs may occur. #Tiles laid with a standard 3-5mm grout joint and cut with a standard tile cutter. BC12049. May 2021

redink 
H O M E S
your home, your choice

Find us on

