



 12 ROTTNEST STREET, BUSHMEAD

 4  2  2  15m



The Karijini

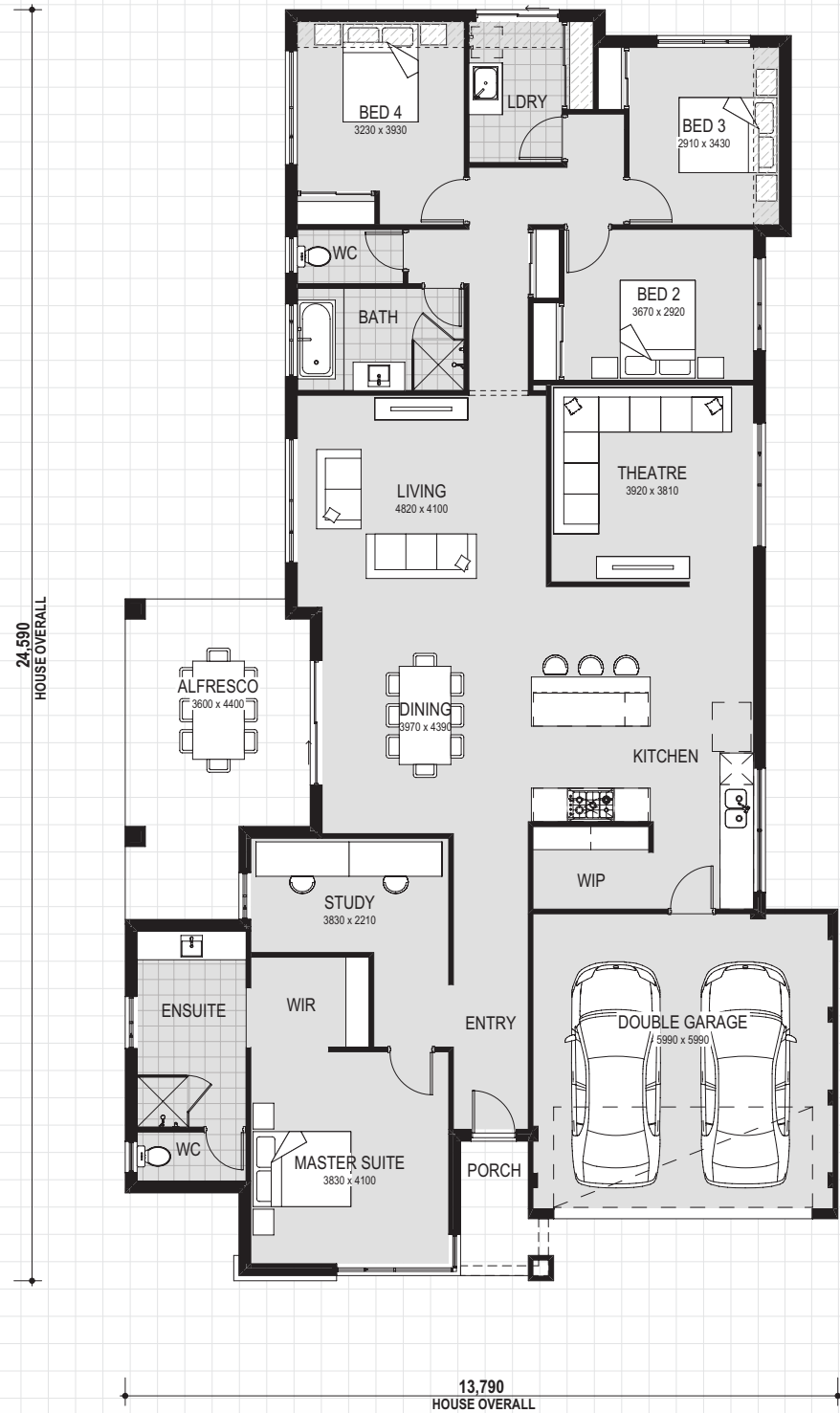
redink 
H O M E S
your home, your choice

The Karijini Choice

Suggested block width 15m

House	210.3m ²
Alfresco	19.5m ²
Porch	3.9m ²
Garage	35.1m ²
Total Area	268.8m ²

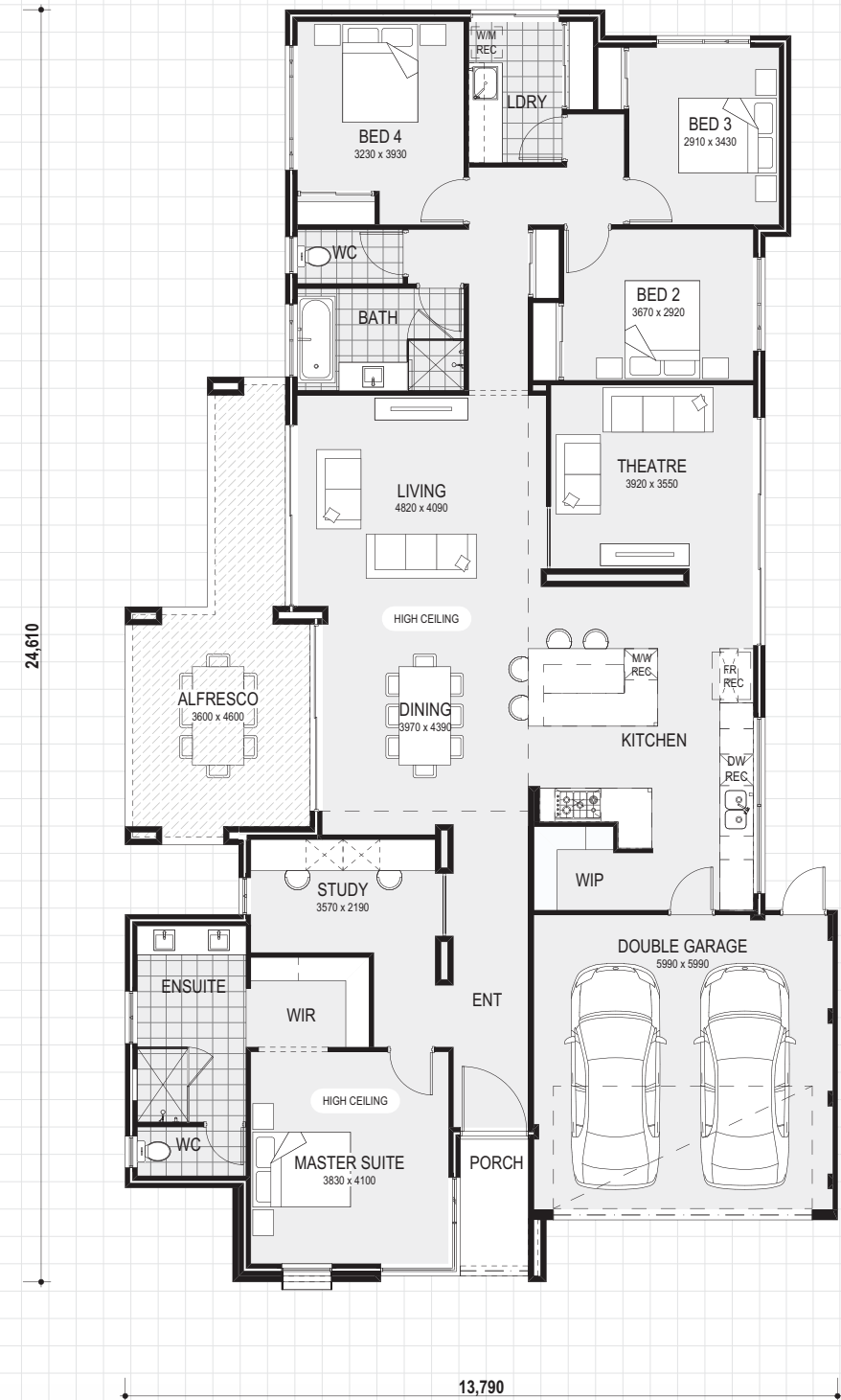
 Personalise your home design by making changes with a red pen



The Karijini Display

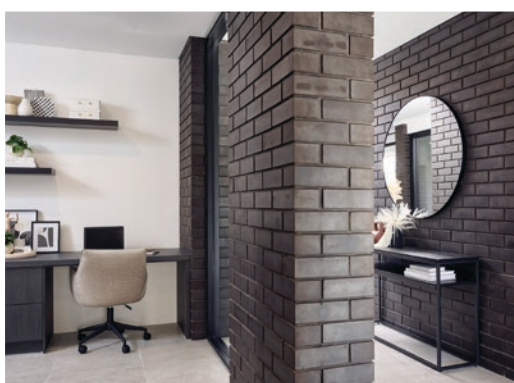
Suggested block width 15m

House	210.5m ²
Alfresco	22.5m ²
Porch	3.8m ²
Garage	35.0m ²
Total Area	271.8m ²



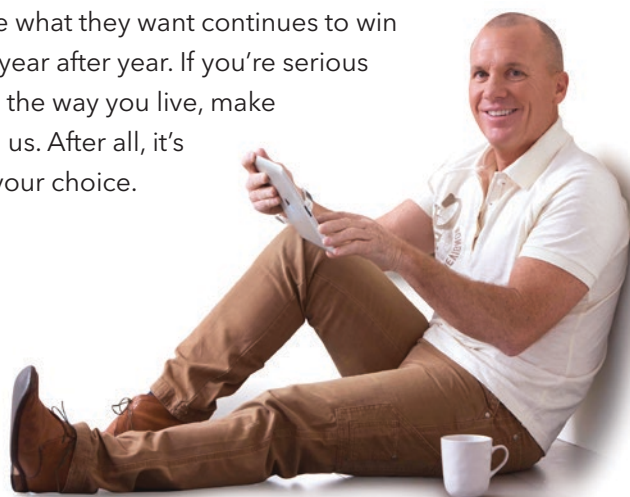


Start with Redink



Scott Park chose 'red ink' as the symbol for what his building company is all about: inviting input and welcoming your changes. Our commitment to giving people what they want continues to win service awards, year after year. If you're serious about changing the way you live, make the change with us. After all, it's your home, it's your choice.

Scott Park
MANAGING DIRECTOR



WINNER OF
9 SERVICE AWARDS



Find us on



#MyRedink

16 Frobisher Street, Osborne Park WA 6017

Ph: 9208 1111 Fax: 9208 1112 Sales: 9208 1110 redinkhomes.com.au